

farmy-truck

PEDESTRIAN DUMPER

**ERS & OPERATORS
INSTRUCTION
MANUAL**

Congratulations!

And thank you for purchasing a new farmry-truck.

We have done our utmost to ensure your farmry truck will be the most trouble free and productive achine you will ever use. Please read the operators manual carefully before using your farmry-truck.

If you would like help or have any questions.

Please have the following relevant information before you call us.

Date of purchase:

Serial number DP:

Dealer/Distributors name:

HINTS FOR SAFE OPERATION

DO Study engine manual before operating your **farmry -truck**

DO Check all nuts, bolts, & wheel studs daily.

DO Be safety conscious & dress appropriately when operating your **farmry -truck**.

Always wear substantial footwear and a hard hat in relevant areas.

DO Exercise extreme caution with the controls when working on steep or slippery surfaces. Especially, when people are near to the working area.

DO Ensure that all safety guards are in place when operating the **farmry -truck**.

DO Disengage drive by releasing clutch lever **before** operating gear change lever.

ATTENTION

DO Handle fuel with extreme caution. Wipe off any spilled petrol before starting the engine.

DO Keep the engine free of any accumulation of dirt, grease, oil or other flammable material.

DO Allow the engine to cool before storing in a confined space.

BE SAFE : FOLLOW INSTRUCTIONS AT ALL TIMES

SAFETY

DO NOT Allow anyone lacking in age or experience to operate your **farmry-truck**.

DO NOT Carry “passengers” on your **farmry-truck**.

DO NOT Start work without completing the daily maintenance checks.

DO NOT Activate gear change lever until clutch lever is released.

DO NOT Operate the **farmry-truck** without exercising appropriate safety precautions.

DO NOT Use other than recommended lubricants or fuels.

ATTENTION

DO NOT Refuel your engine when hot or in the vicinity of any naked flame or burning cigarette etc.

DO NOT Run the petrol engine in a confined area.

DO NOT Run engine with air filter clogged or restricted.

DO NOT Allow debris or any flammable or foreign matter to build up near the exhaust.

DO NOT Store the **farmry -truck** in a location where fuel fumes may accumulate or reach a spark or open flame.

DO NOT Pressure wash directly onto engine electronics.

BE SAFE : EXERCISE COMMON SENSE AT ALL TIMES

OPERATING INSTRUCTIONS

Getting Started:

1. Fill tank with unleaded 4 stroke petrol
2. Set the machine on firm level ground and check fuel & oil levels
3. To start the engine set the choke by pushing the throttle lever fully forward. After 2 or 3 pulls the engine will start.
4. Move the throttle lever, (**No 4**) backward slightly to disengage the choke and set the engine speed to fast. Allow the engine to warm.

To Move Forward:

1. Select required speed with gear change lever (**6**). Hold down the Deadmans/brake handle. Gently engage clutch lever (**9**).
2. Control engine speed with the throttle lever (**4**)

To Reverse:

Stop the **farmry -truck**. Move gear change lever (**6**) to position R (reverse), check behind for obstacles, and then gently engage clutch (**9**).

To Stop:

Release the clutch lever. Disengage the Deadmans/brake handle. Reduce engine speed with the throttle control lever.

To Empty Skip:

1. Stop the machine and disengage the skip release lever (**10**)
2. Jerk both handles upwards; the skip will pivot forward and dump the load with gravity force.

To Reset Skip:

Pull back on the skip and engage the locking catch which holds the skip closed.

NOTE: Check that the locking catch has engaged before moving off.

MAINTENANCE

For Engine Maintenance, Please see your Engine Manual

Routine checks of your **farmry -truck** will ensure trouble free operation with less 'down' time.

Component	Daily	Weekly
Skip Catch Spring	✓	
Belt tension	✓	
Brake adjustment	✓	
Control Cables	✓	
Air Cleaner	✓	

Engine Oil Check	✓	
Tyre Pressure		✓
All Nuts/Bolts		✓

Engine Oil: SAE 10W-30

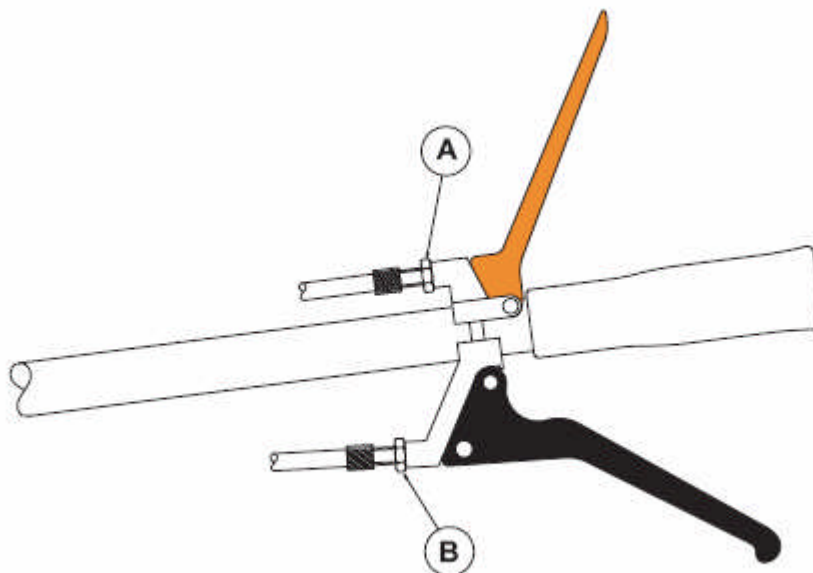
Change: After 1st 2hrs; thereafter every 20 hrs of continuous use

Remember - A daily check takes only minutes but could save you hours.

Be Proud - look after your **farmry -truck**.

To adjust the brake

Loosen the locknut (A) and screw the adjuster clockwise to tighten the brake.



To adjust the clutch

Loosen the locknut (B) and screw the adjuster anti-clockwise to tighten the clutch

WARRANTY

farmry -truck SERIAL NO-_____

12 Calendar months from date of sale for Consumers

90 Days for units used in the Commercial sector

Under the following conditions:-

- ✘ Routine maintenance undertaken in accordance with Owners Manual
- ✘ Returned defective parts are approved by changzhou farmry machinery Co.,Ltd.
- ✘ Machine is not abused or operated with known faults or lack of maintenance.
- ✘ Repairs are in accordance with changzhou farmry machinery Co.,Ltd.

AT AN AGREED JOB RATE

Only defective parts are covered & not wearable components which necessitate replacement through normal wear & tear, i.e. puncture, chipped paint, dented hopper etc. changzhou farmry machinery Co.,Ltd will not be held liable for any consequential losses.

PERSONAL CUSTOMER GUARANTEE STATEMENT

If there is any component, or components, manufactured by changzhou farmry machinery Co.,Ltd which are found to be defective within 12 months from the date of purchase (or 90 days in the case of a machine used for hire/commercial purposes), changzhou farmry machinery Co.,Ltd undertake to replace the faulty component/s free of charge, (provided they are notified immediately upon date of failure).

The following are not covered by this Guarantee

1. Engines - which are guaranteed by their respective manufacturers
 2. A machine which has been subject to operation in excess of recommended capacities, misuse, negligence or accident, or has been altered or modified in a manner which has not been authorised by changzhou farmry machinery Co.,Ltd.
 3. Wear parts, e.g. belts, cables etc.
 4. Transportation Charges - to and from the warranty repair site
- changzhou farmry machinery Co.,Ltd operates a policy of continual development and reserve the right to alter product specification without giving prior notice.

SPARE PARTS LIST

Part No.	Description
DP02	Forward/Reverse Lever Grip
DP0502001	Forward/Reverse lever
DP03	Handle Bar Grip
DP0502003	Handle Bar Cowling
DP14	Honda Engine
DP0502004	Skip Catch
DP18	Clutch/Skip Cable Spring
DP0502005	6 cu ft skip

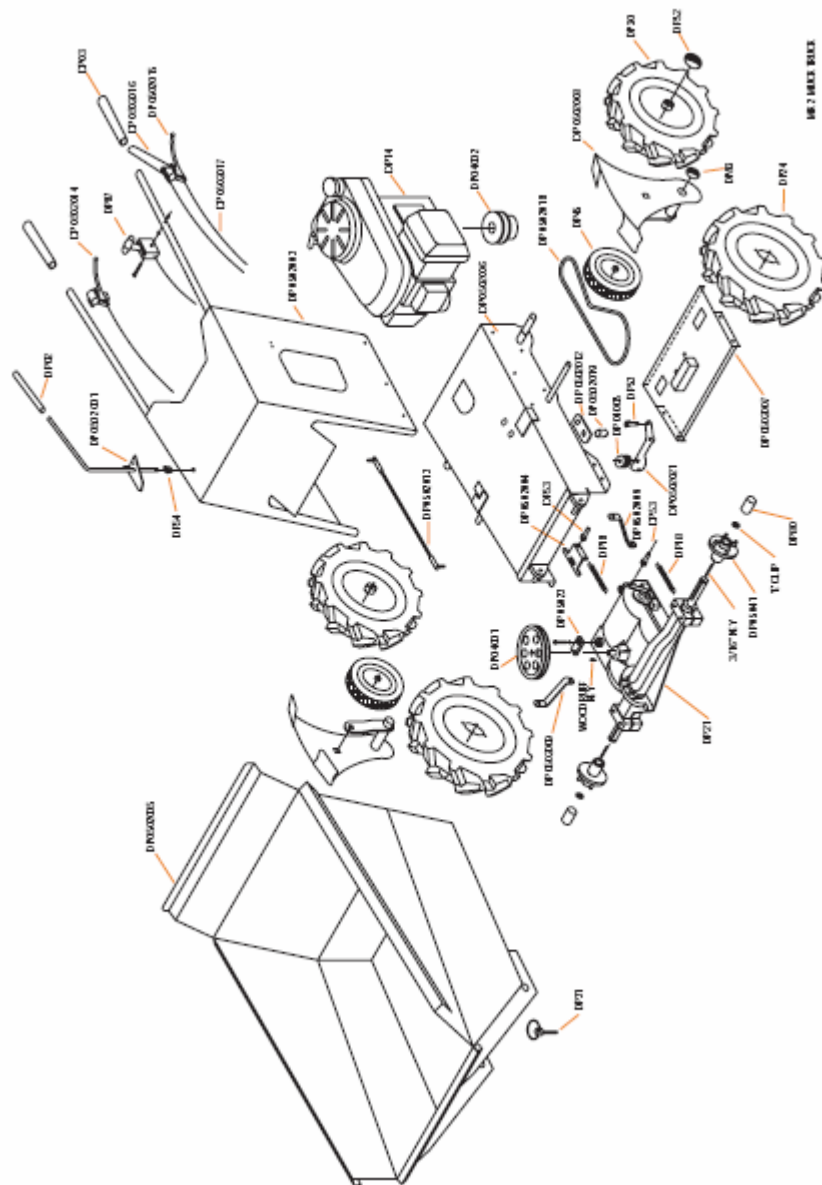
DP21	Transaxle
DP0502006	Main Frame
DP24	Front Wheel Complete
DP0502007	Bottom Plate
DP30	Rear Wheel
DP0502008	Power Drive Bracket
DP31	Lynch Pin
DP0502009	Left/Right Torque Stays
DP32	25mm Star Lock
DP0502012	Clutch Reinforcement Plate
DP35	Decal Set
DP0502013	Forward/reverse tie rod
DP45	4"Wheel
DP0502014	Skip Catch lever
DP54	Gear Change Grommet
DP0502015	Clutch Lever
DP80	Front Wheel Plastic Cap
DP0502016	Brake Lever
DP83	19mm Star Lock
DP0502017	Brake/Clutch/Skip Cable
DP87	Throttle Lever C/W Cable
DP0502018	Drive belt
DP04001	Drive Pulley
DP0502019	Belt Guide Tube
DP04002	Engine Pulley
DP0502021	Clutch pulley bracket
DP04003	Clutch Pulley
DP05023	Shifter Plate
DP05041	Wheel Hub

Tyre Pressures

Front Wheel 30 psi

Middle Wheel 30 psi

Rear Wheel 30 psi



BELT FITTING

Remove only the inspection plate located on the rear of the Chassis (Photo 1).

1. Loosen the M12 Nut on the Guide Bolt (E).
2. Make sure the belt goes around transmission (B) pulley first.

3. Then put the entire belt to the right hand side of the clutch/jockey pulley (C), which pushes at the back of the left hand side of the belt (Flat side).
4. Make sure the belt is located between both of the threaded bolts (D) push the belt onto the engine pulley (A).
5. Re-tighten the M12 nut on the Guide Bolt (E).

Important Note – The belt goes between the long threaded bolts (D) which are beneath/through the inspection plate.

1.



2.

